

LAMPIRAN

Lampiran 1 Kecepatan Kendaraan Jalan Otto Iskandar Dinata

BARAT

1. Sepeda Motor

Kecepatan Sepeda Motor												
32	27	24	23	23	21	16	15	16	15	15	15	15
32	27	24	23	22	21	16	15	16	15	15	15	15
32	27	23	22	22	21	16	15	16	15	15	15	15
32	27	23	23	22	21	16	15	16	15	15	15	15
32	26	23	23	22	21	16	15	16	15	15	15	15
32	26	23	23	22	21	16	15	16	15	15	15	15
32	26	23	23	22	21	16	15	16	15	15	15	15
31	26	23	23	22	21	16	15	16	15	15	15	15
31	26	23	23	22	21	16	15	16	15	15	15	15
30	26	23	23	22	21	16	15	16	15	15	15	15
30	26	23	23	22	21	16	15	16	15	15	15	
30	26	23	23	22	20	16	15	16	15	15	15	
30	26	23	23	22	20	16	15	16	15	15	15	
30	26	23	23	22	20	16	15	16	15	15	15	
30	26	23	23	22	20	16	15	16	15	15	15	
30	26	23	23	22	20	16	15	16	15	15	15	
30	26	23	23	22	20	16	15	16	15	15	15	
29	24	23	23	22	20	15	15	15	15	15	15	
29	24	23	23	21	20	15	15	15	15	15	15	
29	24	23	23	21	20	15	15	15	15	15	15	
29	24	23	23	21	20	15	15	15	15	15	15	
29	24	23	23	21	20	15	15	15	15	15	15	
29	24	23	23	21	20	15	15	15	15	15	15	
27	24	23	23	21	20	15	15	15	15	15	15	

2. Kendaraan Ringan

Kecepatan Kendaraan Ringan								
29	23	21	20	17	16	16	14	14
29	23	21	20	17	16	16	14	14
28	23	21	20	17	16	16	14	14
28	23	21	19	17	16	16	14	14
28	23	21	19	17	16	16	14	14
28	23	21	19	17	16	16	14	14
26	23	21	19	17	16	15	14	14
26	23	21	19	17	16	15	14	14
26	23	21	19	17	16	15	14	14
26	23	21	19	17	16	15	14	14
26	23	20	19	17	16	15	14	14
26	23	20	19	17	16	15	14	14
25	23	20	19	17	16	15	14	14
25	22	20	19	17	16	15	14	14
25	22	20	19	17	16	15	14	14
25	22	20	19	17	16	15	14	14
25	22	20	19	17	16	15	14	14
25	22	20	19	17	16	15	14	14
25	22	20	19	17	16	15	14	14
25	21	20	19	17	16	15	14	14
25	21	20	19	17	16	15	14	
23	21	20	19	16	16	15	14	
23	21	20	17	16	16	15	14	
23	21	20	17	16	16	15	14	

3. Kendaraan Berat

Kendaraan Berat		
21	15	11
18	13	11
18	13	11
18	13	11
16	13	10
16	12	10
16	12	10
15	12	10
15	11	10
15	11	

Kecepatan Kendaraan Jalan Otto Iskandar Dinata

TIMUR

1. Sepeda Motor

Kecepatan Sepeda Motor									
34	26	23	21	20	20	20	20	19	18
34	26	23	21	20	20	20	20	19	18
34	26	23	21	20	20	20	19	19	18
31	26	23	21	20	20	20	19	19	18
31	26	23	21	20	20	20	19	19	
31	26	23	21	20	20	20	19	19	
30	26	23	21	20	20	20	19	19	
30	26	23	21	20	20	20	19	19	
28	26	23	21	20	20	20	19	19	
28	26	23	21	20	20	20	19	19	
28	26	23	21	20	20	20	19	19	
28	26	23	21	20	20	20	19	18	
28	25	23	21	20	20	20	19	18	
28	25	23	21	20	20	20	19	18	
28	25	21	21	20	20	20	19	18	
28	25	21	21	20	20	20	19	18	
28	25	21	21	20	20	20	19	18	
28	25	21	21	20	20	20	19	18	
28	25	21	21	20	20	20	19	18	
27	25	21	21	20	20	20	19	18	
27	25	21	21	20	20	20	19	18	
27	25	21	20	20	20	20	19	18	
26	25	21	20	20	20	20	19	18	
26	23	21	20	20	20	20	19	18	
26	23	21	20	20	20	20	19	18	

2. Kendaraan Ringan

Kecepatan Kendaraan Ringan								
30	25	23	21	20	19	18	17	16
30	25	23	21	20	19	18	17	16
29	25	23	21	20	19	18	17	16
29	25	23	21	20	19	18	16	16
29	25	23	21	20	19	18	16	16
28	25	23	21	20	19	18	16	16
28	25	21	21	20	19	18	16	16
28	25	21	21	19	19	18	16	16
28	24	21	21	19	19	18	16	16
28	24	21	20	19	19	18	16	16
28	24	21	20	19	18	18	16	16
27	24	21	20	19	18	18	16	16
27	24	21	20	19	18	18	16	16
27	24	21	20	19	18	18	16	16
27	24	21	20	19	18	18	16	16
27	24	21	20	19	18	18	16	16
26	24	21	20	19	18	18	16	16
26	24	21	20	19	18	17	16	16
26	24	21	20	19	18	17	16	16
26	24	21	20	19	18	17	16	16
25	24	21	20	19	18	17	16	16
25	24	21	20	19	18	17	16	16
25	24	21	20	19	18	17	16	16
25	23	21	20	19	18	17	16	16
25	23	21	20	19	18	17	16	16

3. Kendaraan berat

Kendaraan Berat		
23	16	15
21	16	14
20	16	14
17	16	14
17	16	14
16	15	
16	15	
16	15	
16	15	
16	15	

Lampiran 2 Data Volume Lalu Lintas

ZONA 1

Nama Jalan : Jalan Otto Iskandar Dinata (Barat)

Tanggal Survey : 11- 11 - 2019

Jam	Kendaraan Ringan			Kendaraan Berat			Sepeda Motor			Kendaraan Tidak Bermotor		
	Belok Kanan	Lurus	Belok Kiri	Belok Kanan	Lurus	Belok Kiri	Belok Kanan	Lurus	Belok Kiri	Belok Kanan	Lurus	Belok Kiri
06.00-06.15	21	-	6	-	-	-	47		95			
06.15-06.30	35	-	14	-	-	-	42		98			
06.30-06.45	30	-	5	-	-	-	45		87			
06.45-07.00	22	-	9	-	-	-	29		78			2
07.00-07.15	33	-	20	2	-	-	59	9	112			
07.15-07.30	28	-	19	1	-	-	44	11	102			
07.30-07.45	22	-	15	-	-	-	35	15	71			2
07.45-08.00	38	-	23	-	-	-	70	11	110			1
08.00-08.15	36	-	23	2	-	-	41	13	102			
08.15-08.30	32	-	21	-	-	-	48	9	112			1
08.30-08.45	32	-	24	-	-	1	59	13	103			1
08.45-09.00	33	-	23	-	-	-	42	16	114			1
09.00-09.15	28	-	15	-	-	-	64	15	118			
09.15-09.30	31	-	30	1	-	-	51	19	96			3
09.30-09.45	26	-	38	-	-	1	59	21	137			1
09.45-10.00	31	-	40	1	-	-	55	17	90			
10.00-10.15	22	-	39	2	-	1	52	24	129	3		1
10.15-10.30	40	-	32	1	-	1	37	11	108	-	2	1
10.30-10.45	61	-	36	-	-	4	31	20	110	1	2	-
10.45-11.00	34	-	23	2	-	-	45	14	85	-	1	2
11.00-11.15	27	-	34	-	-	-	42	20	76	1	-	-
11.15-11.30	32	-	25	-	-	2	38	14	72	-	-	-
11.30-11.45	24	-	28	-	-	-	40	12	81	3	-	-
11.45-12.00	34	-	22	1	-	1	53	16	70	-	-	1
12.00-12.15	32	-	32	-	-	-	55	15	74	-	-	-
12.15-12.30	30	-	26	3	-	-	45	21	77	2	-	-
12.30-12.45	37	-	29	-	-	2	31	26	87	-	-	1
12.45-13.00	42	-	39	-	-	-	38	29	95	-	-	-
13.00-13.15	44	-	34	-	-	-	42	24	111	1	-	-
13.15-13.30	39	-	36	1	-	1	51	21	119	1	-	1
13.30-13.45	31	-	27	2	-	-	40	18	91	-	-	-
13.45-14.00	29	-	29	-	-	1	35	17	84	-	1	-

Jam	Kendaraan Ringan			Kendaraan Berat			Sepeda Motor			Kendaraan Tidak Bermotor		
	Belok Kanan	Lurus	Belok Kiri	Belok Kanan	Lurus	Belok Kiri	Belok Kanan	Lurus	Belok Kiri	Belok Kanan	Lurus	Belok Kiri
14.00-14.15	36	-	30	-	-	1	48	14	87	-	-	3
14.15-14.30	28	-	25	2	-	-	44	18	82	2	1	3
14.30-14.45	26	-	30	2	-	2	57	14	85	-	-	1
14.45-15.00	34	-	23	-	-	2	46	15	82	-	-	-
15.00-15.15	23	-	35	1	-	-	33	17	77	1	2	2
15.15-15.30	39	-	22	-	-	-	57	22	85	-	-	3
15.30-15.45	29	-	25	1	-	-	51	25	98	-	-	2
15.45-16.00	20	-	28	1	-	1	60	28	85	1	-	4
16.00-16.15	27	-	19	1	-	-	68	31	111	-	-	2
16.15-16.30	38	-	26	3	-	1	72	26	149	-	-	1
16.30-16.45	32	-	13	-	-	2	71	21	101	-	-	2
16.45-17.00	34	-	17	2	-	-	66	30	102	1	-	-
17.00-17.15	31	-	27	-	-	-	63	26	120	-	-	3
17.15-17.30	33	-	24	-	-	-	76	21	131	-	2	2
17.30-17.45	24	-	20	-	-	1	66	24	129	-	3	1
17.45-18.00	26	-	23	1	-	-	63	17	88	-	1	2

Nama Jalan : Jalan Tipar Gede (Utara)

Tanggal Survey : 11- 11 - 2019

Jam	Kendaraan Ringan			Kendaraan Berat			Sepeda Motor			Kendaraan Tidak Bermotor		
	Belok Kanan	Lurus	Belok Kiri	Belok Kanan	Lurus	Belok Kiri	Belok Kanan	Lurus	Belok Kiri	Belok Kanan	Lurus	Belok Kiri
06.00-06.15	21	-	6	-	-	-	47	-	95	-	-	-
06.15-06.30	35	-	14	-	-	-	42	-	98	-	-	-
06.30-06.45	30	-	5	-	-	-	45	-	87	-	-	-
06.45-07.00	22	-	9	-	-	-	29	-	78	-	-	2
07.00-07.15	33	-	20	2	-	-	59	9	112	-	-	-
07.15-07.30	28	-	19	1	-	-	44	11	102	-	-	-
07.30-07.45	22	-	15	-	-	-	35	15	71	-	-	2
07.45-08.00	38	-	23	-	-	-	70	11	110	-	-	1
08.00-08.15	36	-	23	2	-	-	41	13	102	-	-	-
08.15-08.30	32	-	21	-	-	-	48	9	112	-	-	1
08.30-08.45	32	-	24	-	-	1	59	13	103	-	-	1
08.45-09.00	33	-	23	-	-	-	42	16	114	-	-	1
09.00-09.15	28	-	15	-	-	-	64	15	118	-	-	-
09.15-09.30	31	-	30	1	-	-	51	19	96	-	-	3
09.30-09.45	26	-	38	-	-	1	59	21	137	-	-	1
09.45-10.00	31	-	40	1	-	-	55	17	90	-	-	-
10.00-10.15	22	-	39	2	-	1	52	24	129	3	-	1
10.15-10.30	40	-	32	1	-	1	37	11	108	-	2	1
10.30-10.45	61	-	36	-	-	4	31	20	110	1	2	-
10.45-11.00	34	-	23	2	-	-	45	14	85	-	1	2
11.00-11.15	27	-	34	-	-	-	42	20	76	1	-	-
11.15-11.30	32	-	25	-	-	2	38	14	72	-	-	-
11.30-11.45	24	-	28	-	-	-	40	12	81	3	-	-
11.45-12.00	34	-	22	1	-	1	53	16	70	-	-	1
12.00-12.15	32	-	32	-	-	-	55	15	74	-	-	-
12.15-12.30	30	-	26	3	-	-	45	21	77	2	-	-
12.30-12.45	37	-	29	-	-	2	31	26	87	-	-	1
12.45-13.00	42	-	39	-	-	-	38	29	95	-	-	-
13.00-13.15	44	-	34	-	-	-	42	24	111	1	-	-
13.15-13.30	39	-	36	1	-	1	51	21	119	1	-	1
13.30-13.45	31	-	27	2	-	-	40	18	91	-	-	-
13.45-14.00	29	-	29	-	-	1	35	17	84	-	1	-
14.00-14.15	36	-	30	-	-	1	48	14	87	-	-	3
14.15-14.30	28	-	25	2	-	-	44	18	82	2	1	3
14.30-14.45	26	-	30	2	-	2	57	14	85	-	-	1
14.45-15.00	34	-	23	-	-	2	46	15	82	-	-	-

Jam	Kendaraan Ringan			Kendaraan Berat			Sepeda Motor			Kendaraan Tidak Bermotor		
	Belok Kanan	Lurus	Belok Kiri	Belok Kanan	Lurus	Belok Kiri	Belok Kanan	Lurus	Belok Kiri	Belok Kanan	Lurus	Belok Kiri
15.00-15.15	23	-	35	1	-	-	33	17	77	1	2	2
15.15-15.30	39	-	22	-	-	-	57	22	85	-	-	3
15.30-15.45	29	-	25	1	-	-	51	25	98	-	-	2
15.45-16.00	20	-	28	1	-	1	60	28	85	1	-	4
16.00-16.15	27	-	19	1	-	-	68	31	111	-	-	2
16.15-16.30	38	-	26	3	-	1	72	26	149	-	-	1
16.30-16.45	32	-	13	-	-	2	71	21	101	-	-	2
16.45-17.00	34	-	17	2	-	-	66	30	102	1	-	-
17.00-17.15	31	-	27	-	-	-	63	26	120	-	-	3
17.15-17.30	33	-	24	-	-	-	76	21	131	-	2	2
17.30-17.45	24	-	20	-	-	1	66	24	129	-	3	1
17.45-18.00	26	-	23	1	-	-	63	17	88	-	1	2

Nama Jalan : Jalan Otto Iskandar Dinata (Timur)

Tanggal Survey : 11- 11 - 2019

Jam	Kendaraan Ringan			Kendaraan Berat			Sepeda Motor			Kendaraan Tidak Bermotor		
	Belok Kanan	Lurus	Belok Kiri	Belok Kanan	Lurus	Belok Kiri	Belok Kanan	Lurus	Belok Kiri	Belok Kanan	Lurus	Belok Kiri
06.00-06.15	2	69	-	-	-	-	41	277	16	-	-	-
06.15-06.30	5	79	-	-	2	-	58	391	37	-	1	-
06.30-06.45	5	107	-	-	4	-	50	478	37	-	-	-
06.45-07.00	7	107	-	-	6	-	51	448	33	-	-	1
07.00-07.15	5	138	-	-	1	-	54	467	35	-	-	-
07.15-07.30	10	107	-	-	6	-	77	319	37	1	-	-
07.30-07.45	10	106	-	-	4	-	60	384	30	-	-	-
07.45-08.00	12	103	-	-	3	-	61	344	28	2	-	-
08.00-08.15	13	108	-	-	6	-	57	347	33	2	-	-
08.15-08.30	22	106	-	-	6	-	101	272	33	1	-	-
08.30-08.45	15	90	-	-	6	-	88	268	35	-	-	-
08.45-09.00	25	102	-	-	11	-	71	278	24	-	-	-
09.00-09.15	18	103	-	1	7	-	58	265	36	-	1	2
09.15-09.30	22	108	-	1	13	-	68	281	34	-	-	-
09.30-09.45	24	106	-	-	11	-	71	274	29	-	-	-
09.45-10.00	23	114	-	-	7	-	60	265	30	-	2	-
10.00-10.15	17	115	-	1	2	-	51	279	38	-	-	2
10.15-10.30	30	146	-	-	8	-	53	267	41	3	1	
10.30-10.45	18	120	-	-	8	-	55	302	43	1	2	1
10.45-11.00	15	117	-	-	7	-	51	304	38	1	3	-
11.00-11.15	21	109	-	-	5	-	57	312	35	-	-	1
11.15-11.30	17	105	-	-	6	-	50	302	35	1	-	-
11.30-11.45	18	107	-	-	4	-	55	304	26	-	-	1
11.45-12.00	12	110	-	-	2	-	63	306	29	-	-	-
12.00-12.15	19	106	-	-	3	-	53	311	31	-	-	-
12.15-12.30	22	113	-	-	-	-	61	308	28	-	-	1
12.30-12.45	25	122	-	-	4	-	54	316	24	-	-	2
12.45-13.00	20	120	-	-	1	-	57	317	31	-	-	-
13.00-13.15	24	114	-	-	6	-	51	302	33	1	-	-
13.15-13.30	19	105	-	-	3	-	53	298	36	1	-	-
13.30-13.45	23	109	-	-	4	-	58	315	40	-	-	-
13.45-14.00	22	113	-	-	2	-	56	332	39	-	1	1
14.00-14.15	16	111	-	-	10	-	51	302	36	1	2	1
14.15-14.30	15	114	-	-	9	-	49	307	33	-	-	-
14.30-14.45	22	124	-	-	8	-	60	290	37	1	-	-

Jam	Kendaraan Ringan			Kendaraan Berat			Sepeda Motor			Kendaraan Tidak Bermotor		
	Belok Kanan	Lurus	Belok Kiri	Belok Kanan	Lurus	Belok Kiri	Belok Kanan	Lurus	Belok Kiri	Belok Kanan	Lurus	Belok Kiri
14.45-15.00	24	121	-	-	5	-	68	307	34	-	1	-
15.00-15.15	19	96	-	-	8	-	48	291	30	-	1	-
15.15-15.30	16	112	-	-	9	-	62	328	31	-	-	-
15.30-15.45	15	109	-	-	5	-	49	312	37	-	3	1
15.45-16.00	11	135	-	-	6	-	54	357	41	-	-	-
16.00-16.15	14	119	-	-	1	-	55	374	43	-	-	3
16.15-16.30	6	148	-	-	6	-	58	386	46	-	-	-
16.30-16.45	12	121	-	1	6	-	53	381	35	-	-	1
16.45-17.00	17	138	1	-	4	-	58	385	39	-	2	-
17.00-17.15	14	100	-	1	5	-	76	414	43	-	-	2
17.15-17.30	17	111	-	-	5	-	67	345	42	-	2	-
17.30-17.45	14	101	-	1	5	-	76	362	37	-	-	-
17.45-18.00	11	82	-	1	2	-	52	334	24	-	-	-

Nama Jalan : Jalan Sikib Dinata (Selatan)

Tanggal Survey : 11- 11 - 2019

Jam	Kendaraan Ringan			Kendaraan Berat			Sepeda Motor			Kendaraan Tidak Bermotor		
	Belok Kanan	Lurus	Belok Kiri	Belok Kanan	Lurus	Belok Kiri	Belok Kanan	Lurus	Belok Kiri	Belok Kanan	Lurus	Belok Kiri
06.00-06.15	-	-	1	-	-	-	23	14	30	1	-	-
06.15-06.30	-	-	1	-	-	-	45	10	26	-	1	-
06.30-06.45	1	-	1	-	-	-	38	9	43	2	1	-
06.45-07.00	-	-	1	-	-	-	39	10	42	-	-	-
07.00-07.15	-	-	-	-	-	-	33	19	24	1	-	2
07.15-07.30	1	-	-	-	-	-	27	14	23	1	-	-
07.30-07.45	-	-	-	-	-	-	25	11	20	-	1	-
07.45-08.00	-	-	-	-	-	-	48	7	45	3	1	1
08.00-08.15	1	-	-	-	-	-	26	12	16	3	1	-
08.15-08.30	-	1	-	-	-	-	23	16	22	2	-	2
08.30-08.45	1	-	-	-	-	-	25	13	21	6	1	1
08.45-09.00	1	-	-	-	-	-	24	8	12	4	-	-
09.00-09.15	2	-	-	-	-	-	19	12	19	5	-	1
09.15-09.30	-	-	2	-	-	-	18	11	16	2	-	-
09.30-09.45	-	-	4	-	-	-	35	11	17	4	-	-
09.45-10.00	-	-	1	-	-	-	24	10	19	2	1	-
10.00-10.15	-	1	-	-	-	-	23	14	13	1	-	1
10.15-10.30	-	-	3	-	-	-	22	12	21	-	1	1
10.30-10.45	1	1	1	-	-	-	21	5	29	3	-	-
10.45-11.00	-	-	1	-	-	-	19	16	25	-	1	-
11.00-11.15	-	-	-	-	-	-	26	21	30	-	-	-
11.15-11.30	-	-	-	-	-	-	27	24	29	-	-	-
11.30-11.45	-	-	-	-	-	-	18	14	17	-	-	-
11.45-12.00	-	-	-	-	-	-	21	11	22	1	-	-
12.00-12.15	-	-	-	-	-	-	30	19	27	-	-	-
12.15-12.30	-	-	-	-	-	-	27	13	24	-	-	-
12.30-12.45	-	-	-	-	-	-	23	17	16	1	-	-
12.45-13.00	-	-	-	-	-	-	25	12	11	-	-	-
13.00-13.15	-	-	-	-	-	-	34	17	20	-	1	1
13.15-13.30	-	-	-	-	-	-	31	23	19	1	-	-
13.30-13.45	-	-	-	-	-	-	26	16	23	-	-	-
13.45-14.00	-	-	-	-	-	-	23	10	20	-	-	-
14.00-14.15	-	-	-	-	-	-	22	11	20	-	-	1
14.15-14.30	1	-	-	-	-	-	23	13	27	-	-	-
14.30-14.45	-	-	-	-	-	-	21	9	16	-	-	-
14.45-15.00	-	-	-	-	-	-	15	12	16	1	-	-

Jam	Kendaraan Ringan			Kendaraan Berat			Sepeda Motor			Kendaraan Tidak Bermotor		
	Belok Kanan	Lurus	Belok Kiri	Belok Kanan	Lurus	Belok Kiri	Belok Kanan	Lurus	Belok Kiri	Belok Kanan	Lurus	Belok Kiri
15.00-15.15	-	-	1	-	-	-	24	10	22	-	-	-
15.15-15.30	-	1	-	-	-	-	15	5	23	1	-	-
15.30-15.45	-	-	1	-	-	-	21	7	29	1	-	-
15.45-16.00	1	-	-	-	-	-	9	16	27	2	-	-
16.00-16.15	-	-	-	-	-	-	20	19	29	-	-	-
16.15-16.30	-	-	-	-	-	-	21	10	25	1	-	-
16.30-16.45	-	-	1	-	-	-	26	16	17	-	-	-
16.45-17.00	-	1	1	-	-	-	12	17	28	-	-	-
17.00-17.15	-	-	2	-	-	-	30	15	30	-	-	-
17.15-17.30	-	-	3	-	-	-	24	11	32	-	-	-
17.30-17.45	-	-	-	-	-	-	22	13	27	-	-	-

ZONA 2

Nama Jalan : Jalan Stasiun Timur

Tanggal Survey : 11- 11 – 2019

Jam	Kendaraan Ringan		Kendaraan Berat		Sepeda Motor		Kendaraan Tidak Bermotor	
	Belok Kanan	Belok Kiri	Belok Kanan	Belok Kiri	Belok Kanan	Belok Kiri	Belok Kanan	Belok Kiri
06.00-06.15	7	24	-	-	55	59	1	-
06.15-06.30	13	38	-	-	52	61	-	-
06.30-06.45	20	32	-	-	47	62	1	-
06.45-07.00	11	33	1	-	62	68	1	1
07.00-07.15	10	35	-	-	57	58	-	-
07.15-07.30	12	39	-	-	51	68	-	-
07.30-07.45	11	33	-	-	59	73	1	1
07.45-08.00	13	37	-	-	59	53	2	-
08.00-08.15	14	36	1	1	64	75	-	-
08.15-08.30	8	32	1	1	66	71	-	2
08.30-08.45	10	37	-	-	66	55	1	-
08.45-09.00	10	35	-	-	44	64	-	1
09.00-09.15	12	35	-	1	63	65	1	-
09.15-09.30	14	35	1	-	61	80	-	-
09.30-09.45	10	35	2	-	62	77	4	-
09.45-10.00	15	34	1	1	78	100	1	-
10.00-10.15	13	39	-	-	70	93	1	-
10.15-10.30	15	47	-	1	69	70	-	2
10.30-10.45	14	50	1	-	64	91	-	1
10.45-11.00	12	41	1	1	53	61	1	-
11.00-11.15	14	41	1	3	52	45	1	-
11.15-11.30	18	34	1	-	64	46	-	1
11.30-11.45	19	32	-	1	49	52	1	-
11.45-12.00	11	36	-	1	51	44	-	2
12.00-12.15	16	27	-	-	47	55	1	1
12.15-12.30	13	21	2	-	56	48	1	-
12.30-12.45	17	30	1	-	53	23	-	1
12.45-13.00	15	19	-	-	49	31	1	1
13.00-13.15	18	14	5	2	53	25	2	-
13.15-13.30	14	19	1	-	63	38	1	-
13.30-13.45	21	13	1	1	54	53	-	-
13.45-14.00	11	16	3	1	52	26	2	-
14.00-14.15	17	20	1	-	47	27	1	-

Jam	Kendaraan Ringan		Kendaraan Berat		Sepeda Motor		Kendaraan Tidak Bermotor	
	Belok Kanan	Belok Kiri	Belok Kanan	Belok Kiri	Belok Kanan	Belok Kiri	Belok Kanan	Belok Kiri
14.15-14.30	17	8	3	-	65	24	-	1
14.30-14.45	19	14	-	-	60	29	-	1
14.45-15.00	14	16	-	1	56	30	1	1
15.00-15.15	11	18	1	-	40	22	-	1
15.15-15.30	29	31	-	2	79	51	-	-
15.30-15.45	6	20	2	-	65	33	1	1
15.45-16.00	24	14	-	-	67	22	-	1
16.00-16.15	13	10	2	-	69	36	-	1
16.15-16.30	19	14	2	1	70	24	-	-
16.30-16.45	24	3	-	-	68	28	-	-
16.45-17.00	19	5	-	-	59	24	1	-
17.00-17.15	17	2	-	1	60	17	1	-
17.15-17.30	13	6	-	-	59	9	2	-
17.30-17.45	7	3	-	1	36	13	2	-
17.45-18.00	11	1	1	-	32	14	-	-

Nama Jalan : Jalan Otto Iskandar Dinata (Barat)

Tanggal Survey : 11- 11 – 2019

Jam	Kendaraan Ringan		Kendaraan Berat		Sepeda Motor		Kendaraan Tidak Bermotor	
	Lurus	Belok Kiri	Lurus	Belok Kiri	Lurus	Belok Kiri	Lurus	Belok Kiri
06.00-06.15	72	4	2	-	-	92	-	-
06.15-06.30	141	1	-	-	-	79	2	-
06.30-06.45	130	-	1	-	-	64	2	-
06.45-07.00	97	-	2	-	-	83	1	1
07.00-07.15	135	1	1	-	-	72	1	1
07.15-07.30	116	-	3	-	-	85	-	-
07.30-07.45	109	-	3	-	-	99	1	-
07.45-08.00	91	2	2	-	-	112	4	2
08.00-08.15	106	1	3	-	-	89	3	1
08.15-08.30	97	-	8	-	-	88	1	2
08.30-08.45	108	-	6	-	-	86	1	1
08.45-09.00	90	1	9	-	-	70	5	2
09.00-09.15	110	-	5	-	1	83	5	1
09.15-09.30	92	1	6	-	-	74	1	3
09.30-09.45	111	-	6	-	-	89	-	1
09.45-10.00	109	1	12	-	-	89	1	1
10.00-10.15	88	-	9	-	221	69	1	3
10.15-10.30	121	-	5	-	220	72	1	1
10.30-10.45	88	-	7	-	207	75	1	-
10.45-11.00	97	-	5	-	233	39	-	-
11.00-11.15	99	2	8	-	206	60	1	-
11.15-11.30	90	-	9	-	239	50	-	1
11.30-11.45	91	2	4	-	212	51	-	4
11.45-12.00	86	-	6	-	267	53	1	-
12.00-12.15	120	1	2	-	263	49	-	1
12.15-12.30	104	3	4	-	304	50	-	2
12.30-12.45	113	2	5	-	281	54	1	1
12.45-13.00	95	1	7	-	280	58	-	-
13.00-13.15	91	11	4	2	254	62	2	1
13.15-13.30	104	10	4	-	242	62	1	-
13.30-13.45	96	13	7	1	252	60	1	-
13.45-14.00	88	16	5	2	240	50	-	1
14.00-14.15	104	9	7	-	222	70	-	2
14.15-14.30	102	12	5	1	250	67	-	1
14.30-14.45	81	17	5	-	214	50	-	1
14.45-15.00	75	16	9	-	227	67	1	1

Jam	Kendaraan Ringan		Kendaraan Berat		Sepeda Motor		Kendaraan Tidak Bermotor	
	Lurus	Belok Kiri	Lurus	Belok Kiri	Lurus	Belok Kiri	Lurus	Belok Kiri
15.00-15.15	90	13	4	-	236	56	-	1
15.15-15.30	88	17	9	-	272	68	3	1
15.30-15.45	91	9	7	-	284	52	1	1
15.45-16.00	108	8	3	-	274	53	4	1
16.00-16.15	92	7	6	-	297	47	1	2
16.15-16.30	99	16	3	-	298	36	3	-
16.30-16.45	100	11	5	-	312	40	-	-
16.45-17.00	102	12	2	-	285	43	-	1
17.00-17.15	102	9	4	-	343	34	-	-
17.15-17.30	96	10	3	2	305	29	1	1
17.30-17.45	75	4	2	-	311	28	-	-
17.45-18.00	86	5	2	1	276	13	1	-

Nama Jalan : Jalan Otto Iskandar Dinata (Timur)

Tanggal Survey : 11- 11 – 2019

Jam	Kendaraan Ringan		Kendaraan Berat		Sepeda Motor		Kendaraan Tidak Bermotor	
	Lurus	Belok Kanan	Lurus	Belok Kanan	Lurus	Belok Kanan	Lurus	Belok Kanan
06.00-06.15	69	-	-	-	256	21	-	-
06.15-06.30	79	-	2	-	269	22	-	1
06.30-06.45	107	-	4	-	463	15	-	-
06.45-07.00	107	-	6	-	436	12	-	-
07.00-07.15	138	-	1	-	449	18	-	-
07.15-07.30	107	-	6	-	295	24	-	-
07.30-07.45	106	-	4	-	354	30	-	1
07.45-08.00	103	-	3	-	310	34	1	-
08.00-08.15	107	1	6	-	322	25	-	-
08.15-08.30	106	-	6	-	249	23	-	-
08.30-08.45	90	-	6	-	253	15	-	-
08.45-09.00	102	-	11	-	243	22	-	-
09.00-09.15	103	-	7	-	248	17	1	-
09.15-09.30	108	-	13	-	250	31	-	-
09.30-09.45	106	-	11	-	244	30	-	-
09.45-10.00	114	-	7	-	235	30	2	-
10.00-10.15	115	-	2	-	254	25	-	-
10.15-10.30	144	2	8	-	254	13	1	-
10.30-10.45	120	-	8	-	302	20	2	-
10.45-11.00	117	-	7	-	290	14	3	-
11.00-11.15	109	-	5	-	302	10	-	-
11.15-11.30	105	-	6	-	296	6	-	-
11.30-11.45	107	-	4	-	295	9	2	-
11.45-12.00	110	-	2	-	294	12	-	-
12.00-12.15	105	1	3	-	304	7	-	1
12.15-12.30	113	-	-	-	292	16	1	-
12.30-12.45	122	-	4	-	302	14	-	-
12.45-13.00	120	-	1	-	314	3	1	-
13.00-13.15	114	-	6	-	283	19	-	-
13.15-13.30	105	-	3	-	287	11	-	-
13.30-13.45	109	-	4	-	306	9	-	-
13.45-14.00	113	-	2	-	327	5	1	-
14.00-14.15	110	1	10	-	294	8	2	-
14.15-14.30	112	2	9	-	298	9	-	-
14.30-14.45	123	1	8	-	280	10	-	-
14.45-15.00	120	1	5	-	295	12	1	-

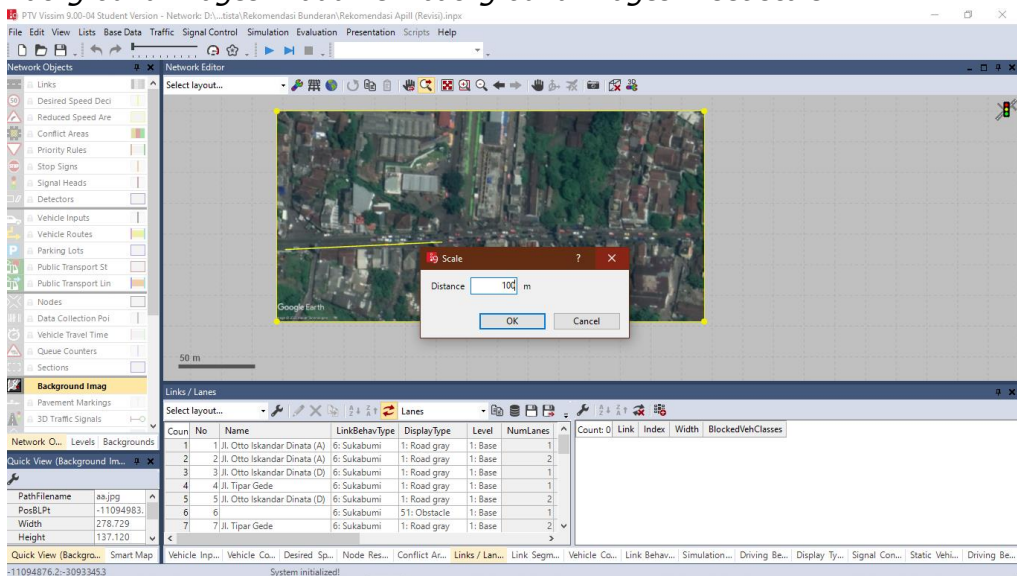
Jam	Kendaraan Ringan		Kendaraan Berat		Sepeda Motor		Kendaraan Tidak Bermotor	
	Lurus	Belok Kanan	Lurus	Belok Kanan	Lurus	Belok Kanan	Lurus	Belok Kanan
15.00-15.15	96	-	8	-	276	15	1	-
15.15-15.30	111	1	9	-	307	21	-	-
15.30-15.45	109	-	5	-	299	13	3	-
15.45-16.00	134	1	6	-	351	6	1	-
16.00-16.15	119	-	1	-	367	7	-	-
16.15-16.30	147	1	6	-	376	10	-	-
16.30-16.45	121	-	6	-	366	15	-	-
16.45-17.00	138	-	4	-	344	21	2	-
17.00-17.15	100	-	5	-	404	10	-	-
17.15-17.30	111	-	5	-	335	10	1	1
17.30-17.45	101	-	5	-	355	7	-	-
17.45-18.00	81	1	2	-	326	8	-	-

Lampiran 3 Mikrosimulasi Permodelan Menggunakan Vissim 9

Dalam melakukan mikrosimulasi pada penelitian ini didukung dengan menggunakan *software Vissim* yang bertujuan untuk memudahkan dalam simulasi. Berikut merupakan tahapan dalam permodelan menggunakan *software vissim*

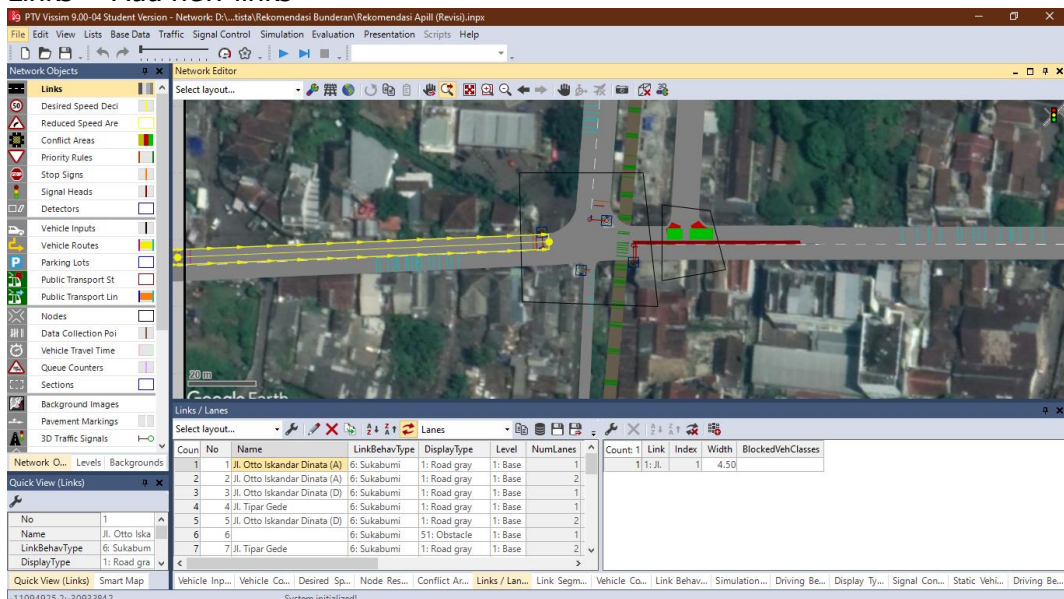
1. Menginput *Background* dan mengatur skala

Background images > add new background images > set scale



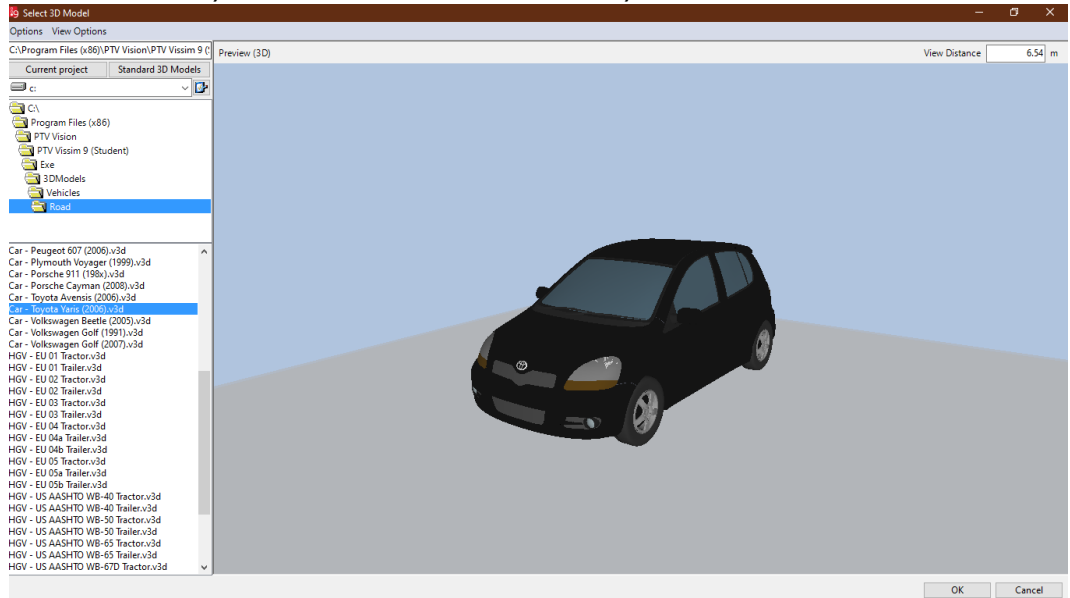
2. Membuat Jaringan Jalan

Links > Add new links



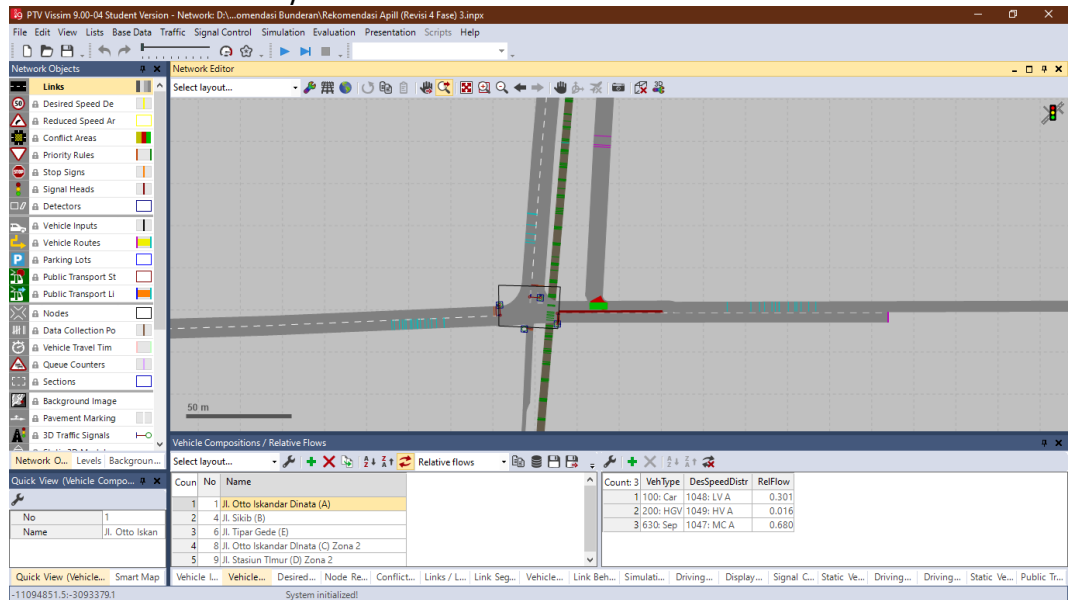
3. Input 3D Model

Base Data > 2D/3D model > Add net list for 2D/3D Models



4. Mengatur komposisi Kendaraan

Traffic > Vehicle Composition



5. Mengatur Kecepatan kendaraan

Base Data > Desired Speed > Add new desire speed distribution

No.	Name	LowerBound	UpperBound
45	1048 LV A	22.00	32.00
46	1049 HV A	19.00	28.00
47	1050 MC B	25.00	36.00
48	1051 LV B	22.00	34.00
49	1052 HV B	20.00	26.00

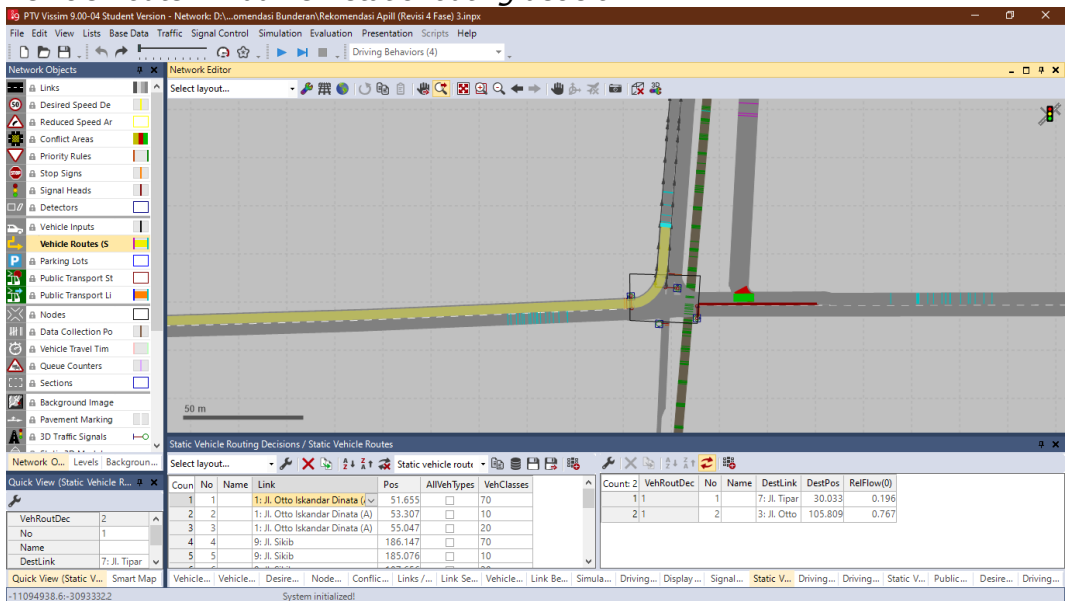
6. Mengatur Driving Behavior

Base Data > Driving Behavior

W4bxAdd	W74bxMult	LnChgRule	Adv-Merg	DesLatPos	OvtLDef	OvtRDef	LatDistDri
2.00	3.00	Free lane selection	<input checked="" type="checkbox"/>	Any	<input type="checkbox"/>	<input type="checkbox"/>	
2.00	3.00	Free lane selection	<input checked="" type="checkbox"/>	Left	<input checked="" type="checkbox"/>	<input checked="" type="checkbox"/>	
0.60	1.00	Free lane selection	<input checked="" type="checkbox"/>	Any	<input checked="" type="checkbox"/>	<input checked="" type="checkbox"/>	
0.50	1.00	Free lane selection	<input checked="" type="checkbox"/>	Any	<input checked="" type="checkbox"/>	<input checked="" type="checkbox"/>	

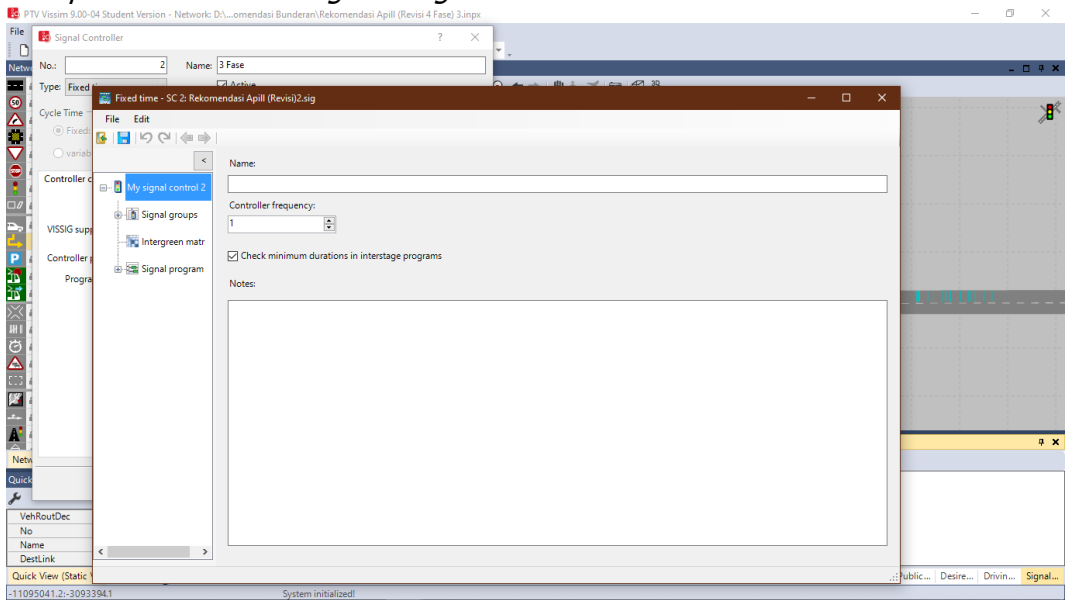
7. Mengatur Rute Kendaraan

Vehicle Route > Add new static routing decision



8. Mengatur Signal Controller

Signal Controls > Signal Controller add > Edit Signal Controller > Signal Groups > Add Phase > Signal Program



9. Hasil Simulasi

Evaluation > Result List > Node Result / Link Segment Result

The screenshot displays the PTV Vissim 9.00-04 Student Version interface. The main window shows a 3D perspective view of a road network with a yellow highlighted link segment. The left sidebar contains a 'Network Objects' panel with various icons for links, speed limits, conflict areas, and other traffic elements. The bottom panel shows the 'Link Segment Results' table, which provides performance metrics for different segments of the network.

Count	SimRun	TimeInt	LinkEvalSegment	Density(All)	DelayRel(All)	Speed(All)	Volume(All)
4	1	0-3600	1: Jl. Otto Iskandar Dinata (A) - 30-40	77.64	0.73 %	26.51	2058.00 /h
5	1	0-3600	1: Jl. Otto Iskandar Dinata (A) - 40-50	78.36	0.50 %	26.25	2057.01 /h
6	1	0-3600	1: Jl. Otto Iskandar Dinata (A) - 50-60	78.99	0.61 %	25.98	2052.00 /h
7	1	0-3600	1: Jl. Otto Iskandar Dinata (A) - 60-70	79.70	0.90 %	25.75	2052.00 /h
8	1	0-3600	1: Jl. Otto Iskandar Dinata (A) - 70-80	79.41	0.54 %	25.84	2051.99 /h
9	1	0-3600	1: Jl. Otto Iskandar Dinata (A) - 80-90	78.52	0.53 %	25.95	2037.87 /h
10	1	0-3600	1: Jl. Otto Iskandar Dinata (A) - 90-100	78.10	0.42 %	26.04	2034.00 /h
11	1	0-3600	1: Jl. Otto Iskandar Dinata (A) - 100-11	77.89	0.58 %	26.09	2032.06 /h
12	1	0-3600	1: Jl. Otto Iskandar Dinata (A) - 110-12	78.13	1.01 %	25.96	2028.00 /h
13	1	0-3600	1: Jl. Otto Iskandar Dinata (A) - 120-13	77.65	0.36 %	26.00	2018.68 /h
14	1	0-3600	1: Jl. Otto Iskandar Dinata (A) - 130-14	77.36	0.47 %	25.87	2001.30 /h
15	1	0-3600	1: Jl. Otto Iskandar Dinata (A) - 140-15	77.25	0.46 %	25.76	1900.10 /h

Lampiran 4 Output Data Vissim

ALTERNATIF 1

Evaluation Nodes

Coun	SimRun	TimeInt	Movement	QLen	LOS(All)	VehDelay(All)
1	1	0-600	1: Zone 1 - 1: Jl. Otto Iskandar Dinata (A)@347.5 - 3: Jl. Otto Iskandar Dinata (D)@4.	37.83	LOS_E	39.28
2	1	0-600	1: Zone 1 - 1: Jl. Otto Iskandar Dinata (A)@347.5 - 7: Jl. Tipar Gede@5.2	37.83	LOS_A	4.10
3	1	0-600	1: Zone 1 - 5: Jl. Otto Iskandar Dinata (D)@156.6 - 2: Jl. Otto Iskandar Dinata (A)@3.	23.28	LOS_D	25.53
4	1	0-600	1: Zone 1 - 5: Jl. Otto Iskandar Dinata (D)@156.6 - 7: Jl. Tipar Gede@5.2	23.28	LOS_F	
5	1	0-600	1: Zone 1 - 9: Jl. Sikib@252.3 - 2: Jl. Otto Iskandar Dinata (A)@3.5	2.41	LOS_F	56.84
6	1	0-600	1: Zone 1 - 11: Jl. Sikib@36.1 - 3: Jl. Otto Iskandar Dinata (D)@4.6	0.14	LOS_A	2.42
7	1	0-600	1: Zone 1 - 11: Jl. Sikib@36.1 - 7: Jl. Tipar Gede@5.2	0.14	LOS_A	0.00
8	1	0-600	1: Zone 1 - 12@253.0 - 12@272.8	0.00	LOS_A	0.00
9	1	0-600	1: Zone 1 - 13: Jl. Tipar Gede@201.5 - 2: Jl. Otto Iskandar Dinata (A)@3.5	5.81	LOS_D	31.39
10	1	0-600	1: Zone 1 - 14: Jl. Tipar Gede@201.0 - 3: Jl. Otto Iskandar Dinata (D)@4.6	0.32	LOS_A	1.66
11	1	0-600	1: Zone 1	9.97	LOS_F	25.77

Evaluation Link Segments

Coun	SimRun	TimeInt	LinkEvalSegment	Density(All)	DelayRel(All)	Speed(All)	Volume(All)
1	3	0-3600	1: Jl. Otto Iskandar Dinata (A) - 0-10	78.09	0.52 %	26.36	2058.00 /h
2	3	0-3600	1: Jl. Otto Iskandar Dinata (A) - 10-20	76.88	0.60 %	26.77	2058.00 /h
3	3	0-3600	1: Jl. Otto Iskandar Dinata (A) - 20-30	76.68	0.52 %	26.84	2058.00 /h
4	3	0-3600	1: Jl. Otto Iskandar Dinata (A) - 30-40	77.64	0.73 %	26.51	2058.00 /h
5	3	0-3600	1: Jl. Otto Iskandar Dinata (A) - 40-50	78.36	0.50 %	26.25	2057.01 /h
6	3	0-3600	1: Jl. Otto Iskandar Dinata (A) - 50-60	78.99	0.61 %	25.98	2052.00 /h
7	3	0-3600	1: Jl. Otto Iskandar Dinata (A) - 60-70	79.70	0.90 %	25.75	2052.00 /h
8	3	0-3600	1: Jl. Otto Iskandar Dinata (A) - 70-80	79.41	0.54 %	25.84	2051.99 /h
9	3	0-3600	1: Jl. Otto Iskandar Dinata (A) - 80-90	78.52	0.53 %	25.95	2037.87 /h
10	3	0-3600	1: Jl. Otto Iskandar Dinata (A) - 90-100	78.10	0.42 %	26.04	2034.00 /h
11	3	0-3600	1: Jl. Otto Iskandar Dinata (A) - 100-11	77.89	0.58 %	26.09	2032.06 /h
12	3	0-3600	1: Jl. Otto Iskandar Dinata (A) - 110-12	78.13	1.01 %	25.96	2028.00 /h
13	3	0-3600	1: Jl. Otto Iskandar Dinata (A) - 120-13	77.65	0.36 %	26.00	2018.68 /h
14	3	0-3600	1: Jl. Otto Iskandar Dinata (A) - 130-14	77.36	0.47 %	25.87	2001.30 /h
15	3	0-3600	1: Jl. Otto Iskandar Dinata (A) - 140-15	77.25	0.46 %	25.76	1990.10 /h
16	3	0-3600	1: Jl. Otto Iskandar Dinata (A) - 150-16	78.65	2.35 %	25.25	1986.00 /h
17	3	0-3600	1: Jl. Otto Iskandar Dinata (A) - 160-17	79.20	3.16 %	25.07	1985.50 /h
18	3	0-3600	1: Jl. Otto Iskandar Dinata (A) - 170-18	77.74	2.06 %	25.38	1972.76 /h
19	3	0-3600	1: Jl. Otto Iskandar Dinata (A) - 180-19	77.26	1.64 %	25.47	1968.00 /h
20	3	0-3600	1: Jl. Otto Iskandar Dinata (A) - 190-20	77.80	2.13 %	25.29	1968.00 /h
21	3	0-3600	1: Jl. Otto Iskandar Dinata (A) - 200-21	77.69	1.91 %	25.33	1968.00 /h
22	3	0-3600	1: Jl. Otto Iskandar Dinata (A) - 210-22	77.19	1.28 %	25.50	1968.00 /h

ALTERNATIF 2

Evaluation Nodes

Coun	SimRun	TimeInt	Movement	QLen	LOS(All)	VehDelay(All)
1	1	0-600	1: Zone 1 - 1: Jl. Otto Iskandar Dinata (A)@341.6 - 3: Jl. Otto Iskandar Dinata (D)@8.	31.30	LOS_C	23.18
2	1	0-600	1: Zone 1 - 1: Jl. Otto Iskandar Dinata (A)@341.6 - 7: Jl. Tipar Gede@13.6	31.30	LOS_C	28.66
3	1	0-600	1: Zone 1 - 5: Jl. Otto Iskandar Dinata (D)@475.1 - 2: Jl. Otto Iskandar Dinata (A)@9.	19.52	LOS_C	22.32
4	1	0-600	1: Zone 1 - 5: Jl. Otto Iskandar Dinata (D)@475.1 - 7: Jl. Tipar Gede@13.6	19.52	LOS_F	
5	1	0-600	1: Zone 1 - 9: Jl. Sikib@241.3 - 2: Jl. Otto Iskandar Dinata (A)@9.3	1.41	LOS_D	39.48
6	1	0-600	1: Zone 1 - 11: Jl. Sikib@25.1 - 3: Jl. Otto Iskandar Dinata (D)@8.7	0.16	LOS_A	0.26
7	1	0-600	1: Zone 1 - 11: Jl. Sikib@25.1 - 7: Jl. Tipar Gede@13.6	0.16	LOS_A	3.46
8	1	0-600	1: Zone 1 - 12@242.1 - 12@281.9	0.00	LOS_A	0.00
9	1	0-600	1: Zone 1 - 13: Jl. Tipar Gede@192.6 - 2: Jl. Otto Iskandar Dinata (A)@9.3	7.31	LOS_D	42.76
10	1	0-600	1: Zone 1 - 14: Jl. Tipar Gede@192.0 - 3: Jl. Otto Iskandar Dinata (D)@8.7	0.08	LOS_A	1.05
11	1	0-600	1: Zone 1	8.54	LOS_F	22.69

Evaluation Link Segments

Coun	SimRun	TimeInt	LinkEvalSegment	Density(All)	DelayRel(All)	Speed(All)	Volume(All)
36	14	0-3600	2: Jl. Otto Iskandar Dinata (A) - 0-10	122.66	15.79 %	22.62	2774.24 /h
37	14	0-3600	2: Jl. Otto Iskandar Dinata (A) - 10-20	142.74	6.61 %	24.92	3556.71 /h
38	14	0-3600	2: Jl. Otto Iskandar Dinata (A) - 20-30	138.38	3.91 %	25.62	3545.11 /h
39	14	0-3600	2: Jl. Otto Iskandar Dinata (A) - 30-40	137.43	3.88 %	25.69	3530.98 /h
40	14	0-3600	2: Jl. Otto Iskandar Dinata (A) - 40-50	137.50	4.21 %	25.65	3526.31 /h
41	14	0-3600	2: Jl. Otto Iskandar Dinata (A) - 50-60	137.40	4.19 %	25.63	3522.00 /h
42	14	0-3600	2: Jl. Otto Iskandar Dinata (A) - 60-70	136.16	3.39 %	25.80	3513.53 /h
43	14	0-3600	2: Jl. Otto Iskandar Dinata (A) - 70-80	135.77	3.39 %	25.76	3498.11 /h
44	14	0-3600	2: Jl. Otto Iskandar Dinata (A) - 80-90	135.76	3.49 %	25.72	3491.67 /h
45	14	0-3600	2: Jl. Otto Iskandar Dinata (A) - 90-100	136.62	4.59 %	25.50	3484.08 /h
46	14	0-3600	2: Jl. Otto Iskandar Dinata (A) - 100-11	136.53	4.95 %	25.46	3476.23 /h
47	14	0-3600	2: Jl. Otto Iskandar Dinata (A) - 110-12	136.31	4.99 %	25.44	3467.17 /h
48	14	0-3600	2: Jl. Otto Iskandar Dinata (A) - 120-13	135.01	4.53 %	25.59	3454.84 /h
49	14	0-3600	2: Jl. Otto Iskandar Dinata (A) - 130-14	134.88	4.76 %	25.58	3450.00 /h
50	14	0-3600	2: Jl. Otto Iskandar Dinata (A) - 140-15	135.08	5.16 %	25.52	3447.01 /h
51	14	0-3600	2: Jl. Otto Iskandar Dinata (A) - 150-16	135.60	5.70 %	25.34	3436.00 /h
52	14	0-3600	2: Jl. Otto Iskandar Dinata (A) - 160-17	134.65	5.35 %	25.44	3425.44 /h

ALTERNATIF 3

Evaluation Nodes

Coun	SimRun	TimeInt	Movement	QLen	QLenMax	LOS(All)	VehDelay(All)
1	1	0-600	2: Simpang Baru Timur - 5: Jl. Otto Iskandar Dinata (D)@450.3 - 14@4.9	0.02	6.34	LOS_A	1.46
2	1	0-600	2: Simpang Baru Timur - 17@11.2 - 3: Jl. Otto Iskandar Dinata (B)@10.4	0.46	20.43	LOS_A	1.36
3	1	0-600	2: Simpang Baru Timur - 21@16.4 - 3: Jl. Otto Iskandar Dinata (B)@10.4	0.00	0.00	LOS_A	1.02
4	1	0-600	2: Simpang Baru Timur - 21@16.4 - 14@4.9	0.00	0.00	LOS_A	0.70
5	1	0-600	2: Simpang Baru Timur - 10006@0.6 - 14@4.9	0.45	20.44	LOS_A	0.81
6	1	0-600	2: Simpang Baru Timur	0.23	20.44	LOS_A	1.28
7	1	0-600	3: Simpang Baru Utara - 4: Jl. Tipar Gede@294.4 - 16@3.2	8.43	36.99	LOS_C	18.06
8	1	0-600	3: Simpang Baru Utara - 19@37.4 - 16@3.2	0.96	33.57	LOS_A	3.31
9	1	0-600	3: Simpang Baru Utara - 20@38.3 - 7: Jl. Tipar Gede@2.3	0.00	0.00	LOS_A	1.20
10	1	0-600	3: Simpang Baru Utara	3.13	36.99	LOS_A	7.62
11	1	0-600	4: Simpang Baru Barat - 6: Jl. Otto Iskandar Dinata (A)@33.8 - 13@3.7	0.67	18.26	LOS_A	5.22
12	1	0-600	4: Simpang Baru Barat - 15@43.4 - 2: Jl. Otto Iskandar Dinata (A)@4.1	0.35	32.05	LOS_A	0.83
13	1	0-600	4: Simpang Baru Barat - 15@43.4 - 13@3.7	0.16	17.36	LOS_A	4.95
14	1	0-600	4: Simpang Baru Barat	0.39	32.05	LOS_A	3.10
15	1	0-600	5: Simpang Baru Selatan - 9: Jl. Sikib@232.2 - 15@6.3	0.00	0.00	LOS_A	0.51
16	1	0-600	5: Simpang Baru Selatan - 14@32.3 - 8: Jl. Sikib@2.5	2.11	38.46	LOS_A	1.61
17	1	0-600	5: Simpang Baru Selatan - 14@32.3 - 15@6.3	2.11	38.46	LOS_A	1.11
18	1	0-600	5: Simpang Baru Selatan	1.05	38.46	LOS_A	1.11
19	1	0-600	6: Simpang Baru Stasiun - 10: Jl. Stasiun Timur@290.3 - 21@10.7	0.00	0.00	LOS_A	0.03
20	1	0-600	6: Simpang Baru Stasiun - 16@16.0 - 11: Jl. Stasiun Timur@2.6	11.41	25.78	LOS_F	
21	1	0-600	6: Simpang Baru Stasiun - 10007@0.0 - 17@5.8	11.41	25.78	LOS_A	1.17
22	1	0-600	6: Simpang Baru Stasiun	7.61	25.78	LOS_F	0.91

Evaluation Link Segments

Coun	SimRun	TimeInt	LinkEvalSegment	DelayRel(All)	Speed(All)	Volume(All)	Density(All)	Volume(10)	Volume(20)	Volume(70)
13	2	0-3600	5: Jl. Otto Iskandar Dinata (D) - 0-10	1.71 %	18.78	1666.67	88.76	490.20	0.00	1176.47
13	2	0-3600	5: Jl. Otto Iskandar Dinata (D) - 10-20	0.88 %	19.18	1630.87	85.05	473.15	0.00	1157.72
13	2	0-3600	5: Jl. Otto Iskandar Dinata (D) - 20-30	0.70 %	18.85	1617.34	85.80	470.59	0.00	1146.75
13	2	0-3600	5: Jl. Otto Iskandar Dinata (D) - 30-40	0.77 %	18.49	1607.84	86.96	470.59	0.00	1137.25
14	2	0-3600	5: Jl. Otto Iskandar Dinata (D) - 40-50	1.38 %	18.19	1607.84	88.38	470.59	0.00	1137.25
14	2	0-3600	5: Jl. Otto Iskandar Dinata (D) - 50-60	0.94 %	18.24	1607.84	88.15	470.59	0.00	1137.25
14	2	0-3600	5: Jl. Otto Iskandar Dinata (D) - 60-70	0.48 %	18.51	1607.84	86.87	470.59	0.00	1137.25
14	2	0-3600	5: Jl. Otto Iskandar Dinata (D) - 70-80	0.60 %	18.44	1601.59	86.88	464.34	0.00	1137.25
14	2	0-3600	5: Jl. Otto Iskandar Dinata (D) - 80-90	1.34 %	18.47	1571.17	85.08	450.98	0.00	1120.19
14	2	0-3600	5: Jl. Otto Iskandar Dinata (D) - 90-100	1.33 %	18.45	1529.41	82.90	450.98	0.00	1078.43
14	2	0-3600	5: Jl. Otto Iskandar Dinata (D) - 100-11	2.62 %	18.19	1525.77	83.88	447.34	0.00	1078.43
14	2	0-3600	5: Jl. Otto Iskandar Dinata (D) - 110-12	0.86 %	18.53	1488.47	80.32	415.70	0.00	1072.77
14	2	0-3600	5: Jl. Otto Iskandar Dinata (D) - 120-13	0.95 %	18.52	1457.77	78.73	411.76	0.00	1046.00
14	2	0-3600	5: Jl. Otto Iskandar Dinata (D) - 130-14	2.59 %	18.31	1435.90	78.42	411.76	0.00	1024.13

DAFTAR RIWAYAT HIDUP



A. Identitas Pribadi

Nama : Rio Riswanda
Notar : 16.I.0308
Tempat, Tanggal Lahir : Samarinda, 17 November 1998
Jenis Kelamin : Laki-Laki
Alamat : Jalan Pelita 4, Blok J5, No.18, Rt.32,
Samarinda, Kalimantan Timur
Telp : (0541) 6242250
Email : orioriswanda@gmail.com
Motto : *" You can only change yourself if you challenge yourself".*

B. Riwayat Pendidikan

1. SMA Negeri 2 Kota Samarinda
2. SMP Negeri 2 RSBI Kota Samarinda
3. SD Negeri 023 Kota Samarinda
4. TK Handayani 1 Kota Samarinda